

Hess Grade: G2

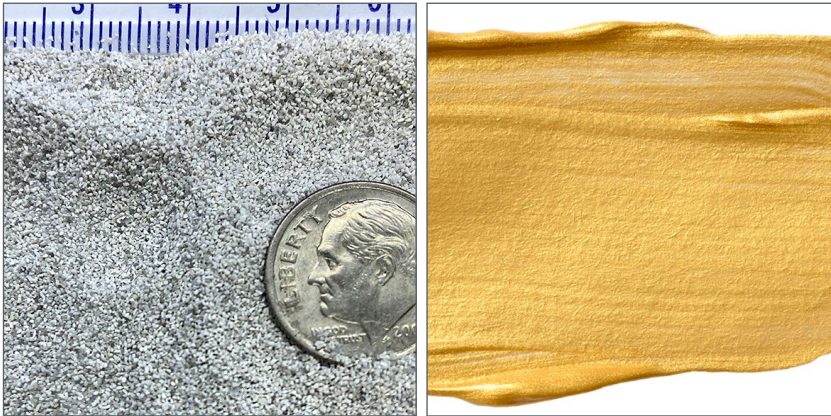
PARTICLE SIZE SPECIFICATION GRADE G2

SIZE			ALLOWABLE PERCENT PASSING
MICRON	MM	U.S. MESH	
425	0.425	40	99.5-100
300	0.3	50	16-46
250	0.25	60	6-20
180	0.18	80	0-8

TEST METHOD: ASTM C136-06

LOOSE BULK DENSITY GRADE G2

[50 lb/per cubic foot [801 kg/per cubic meter] (ASTM C29)



Left: HP Grade designation G2. Right: Grade used to add texture to paints and coatings for decorative or functional purposes.

GRADE APPLICATIONS

- Metal finishing
- Texturing grit/non-skid surface paints, coating
- Cosmetic exfoliating grit (foot/hand/body scrubs and soaps)
- Cosmetic pumice scrub stones
- Gesso texturizing grit

PACKAGING OPTIONS

- 1 or 2.5 lb resealable bags
- 20 lb [9 kg] box
- 45 lb [20.4 kg] bags

ORDER

- Samples, small quantities, and single production bags (up to 3): order direct from the PumiceStore.com
- Partial pallets, full pallets, truckloads: contact us at sales@hesspumice.com or call 208-766-4777

PUMICE TECHNICAL DATA

Chemical analysis, physical properties, and other common data shared by all Hess Pumice grades are detailed on back.



(208) 766-4777 • www.hesspumice.com

Mining and refining the purest commercial deposit of white pumice on the planet.

Hess Pumice Technical Data

CHEMICAL ANALYSIS AND PHYSICAL PROPERTIES

Chemical Name: Amorphous Aluminum Silicate

TYPICAL ANALYSIS	GENERAL PROPERTIES
• Silicon Dioxide: 76.2%	• Appearance: White powder
• Aluminum Oxide: 13.5%	• Hardness (MOHS): 6
• Ferric Oxide: 1.1%	• pH: 7.2
• Ferrous Oxide: 0.1%	• Radioactivity: None
• Sodium Oxide: 1.6%	• Softening Point: 900 degrees C
• Potassium Oxide: 1.8%	• Water Soluble Substances: 0.15%
• Calcium Oxide: 0.8%	• Loss on Ignition - 5%
• Titanium Oxide: 0.2%	• GE Brightness: 84
• Magnesium Oxide: .05%	• Specific Gravity: 2.2
• Moisture: <1.0%	• Reactivity: Inert
• Crystalline SiO ₂ : None Detected	(except in the presence of calcium hydroxide or hydrofluoric acid)

DESCRIPTION

Amorphous (non-crystalline) in structure and composed primarily of aluminum silicate, pumice is a naturally calcined volcanic glass foam consisting of highly vesicular strands permeated with tiny air bubbles. It is these frothy, friable glass vesicles that, when carefully refined to various grades, give pumice its unique and infinitely useful qualities.

NOTES

- Chemical analysis and physical properties provided are common to all raw Hess pumice grades.
- **Grade Variety.** The natural, hard-yet-friable character of our pumice combined with our crushing and screening expertise allow us to offer pumice grades and grade blends down to 3 microns.
- **Safe to Use.** No hazardous crystalline structure: testing for crystalline silica (airborne particles of respirable size) finds no measurable Crystalline Silica (SiO₂) present. Free of heavy metals, pesticides, nano-particles, allergens. Certified organic input material.
- **Purity:** As the result of centuries of wave action from a now-extinct inland sea, our pumice is remarkably pure. Our mine grades are typically comprised of 98% pumice and 2% other igneous minerals, which are not removed through our mining processes.
- **Storage:** Keep dry and protected from the elements until use.



Pumice is a foamed glass stone naturally expanded by explosive volcanic eruption.